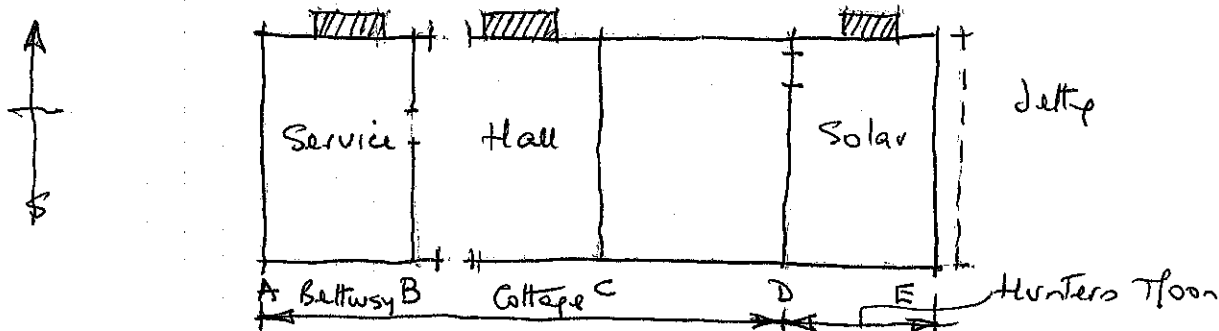


Added back chimneys



A 4 bay medieval open hall house with jettied, floored East end. Timber framed with arching braces, brick nogged, clasped purlins, hipped roof, the West end rebuilt in brick. Probably a farm house, divided in two later. c. 1550

Jettied to farm yard. Long arching braces. Flat stepped steps to wall plates. Shutter groove to E. end for floor widows. Jewls at E. E. is hold jetty. Two bays floored (at E. end) with one bay open hall is unusual - was the bay C+D open to the hall on the ground floor? This is known. Wide jewls. Curved wind braces. 1839 one house, now two.

